

DATE	ISSUE DATE	DESCRIPTION
6/27/2018	REVISED PER RI DEPT OF ED.	

DATE	REVISIONS	DESCRIPTION

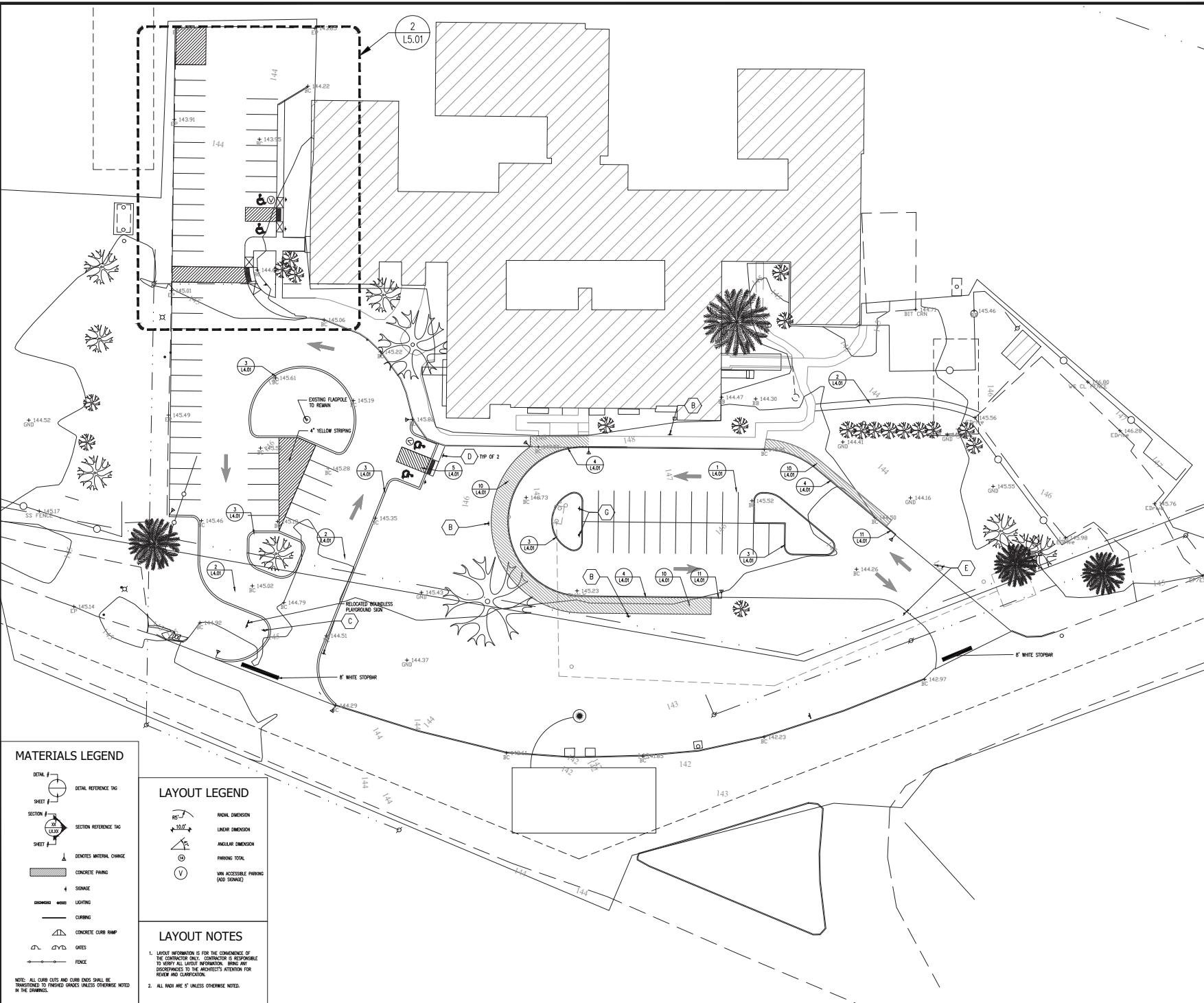


**RICHMOND
ELEMENTARY
SCHOOL SITE
IMPROVEMENTS**

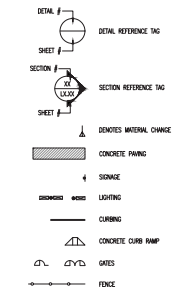
190 KINGSTOWN ROAD
RICHMOND, RI 02898

PROJECT NO.: 15056 DRAWN BY: DDM
**SITE LAYOUT &
MATERIALS PLAN**

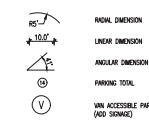
DRAWING NO.:
L2.01



MATERIALS LEGEND



LAYOUT LEGEND



LAYOUT NOTES

- LAYOUT INFORMATION IS FOR THE CONVENIENCE OF THE CONTRACTOR ONLY. CONTRACTOR IS RESPONSIBLE TO VERIFY ALL LAYOUT INFORMATION. BRING ANY DISCREPANCIES TO THE ARCHITECT'S ATTENTION FOR REVIEW AND CLARIFICATION.
- ALL DIMS ARE 6\"/>

NOTE: ALL CURB CUTS AND CURB DIMS SHALL BE TRANSDUCED TO FINISHED GRADE UNLESS OTHERWISE NOTED IN THE DRAWINGS.