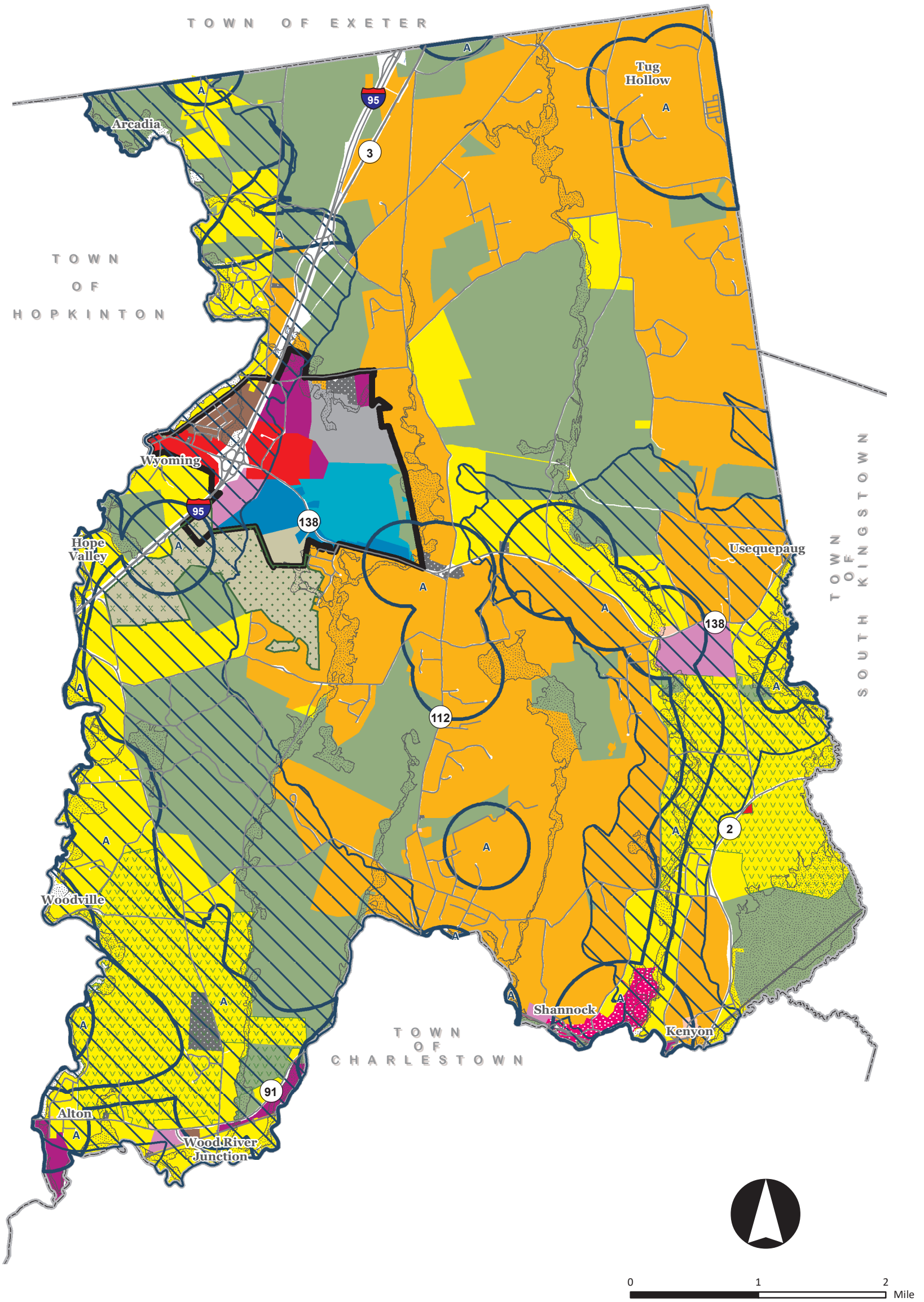


This map is not the product of a Professional Land Survey. It was created by Mapping and Planning Services for general reference, informational, planning, and guidance use, and is not a legally authoritative source as to location of natural or manmade features. Proper interpretation of this map may require the assistance of appropriate professional services. Mapping and Planning Services makes no warranty, express or implied, related to the spatial accuracy, reliability, completeness, or currentness of this map.



RICHMOND COMPREHENSIVE COMMUNITY PLAN 2021

Map 13 - Future Land Use Plan

- Municipal
- Roads
- Railway

- Wyoming/Route 138 Infill and Growth Area
- Potential Future Growth Area
- Aquifer Overlay District - Sub District A
- Aquifer Overlay District - Sub District B
- Flood Overlay District
- Agriculture Overlay District
- Resort Overlay**
- Low Density Residential
- Medium Density Residential

- Conservation / Open Space
- Residential High
- Residential Medium
- Residential Low
- General Business
- Neighborhood Business
- Shannock Village
- Industrial

- Light Industrial
- Flex
- Planned Development District
- Planned Development Resort District
- Planned Unit Development-Village District
- Public & Governmental

Data sources: Richmond GIS, RIGIS

Note: The new Flood Overlay District (approved 3/17/2020), the new Aquifer Overlay District (approved 7/18/2023) and the FLU Amendment for Flex Tech (approved 9/5/2023) are delineated.